

# MONTHLY MEMBERSHIP PROGRESS REPORT

LOCATION INDIA

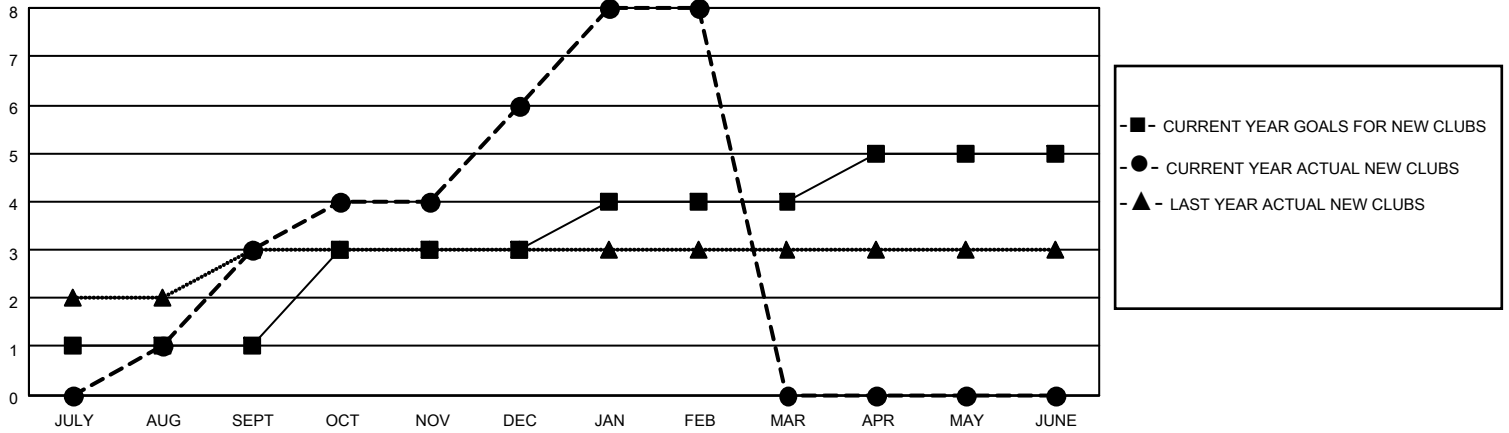
District 318 C

Results as of: 2/28/2021

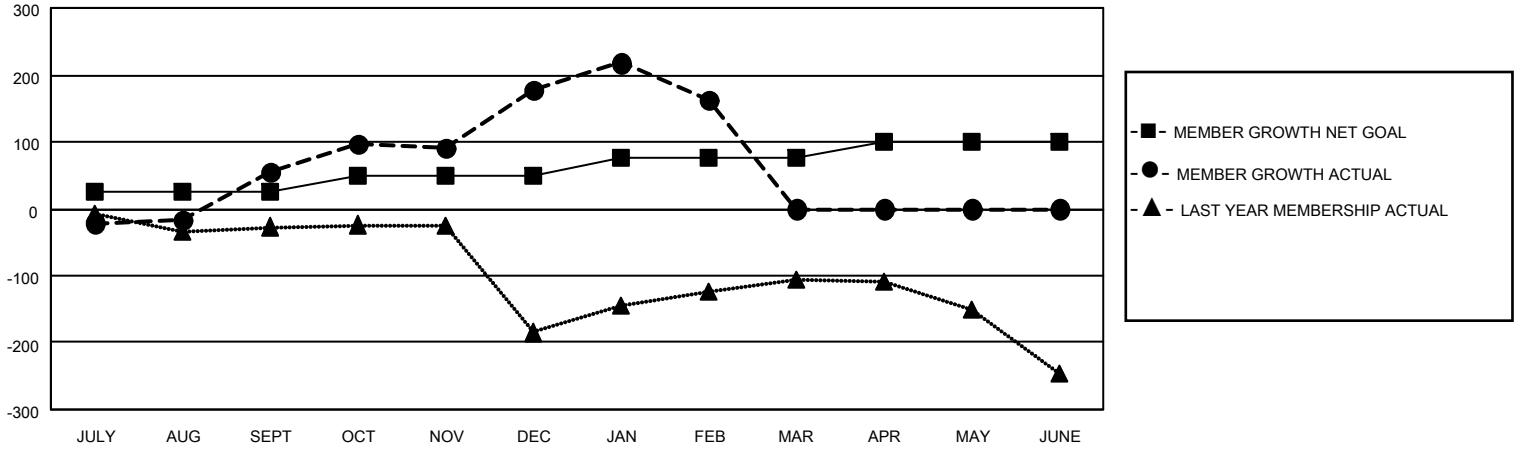
Clubs			
RESULTS FOR 2020-2021			
QUARTER	NEW CLUB GOAL	NEW CLUBS	DROPPED CLUBS
JULY/AUG/SEPT	1	3	0
OCT/NOV/DEC	2	3	0
JAN/FEB/MAR	1	2	3
APR/MAY/JUNE	1	0	0

Members			
RESULTS FOR 2020-2021			
QUARTER	MEMBER GROWTH NET GOAL	MEMBER GROWTH ACTUAL	DROPPED MEMBERS ACTUAL (including transfers)
JULY/AUG/SEPT	25	150	79
OCT/NOV/DEC	25	198	67
JAN/FEB/MAR	25	48	61
APR/MAY/JUNE	25	0	0

**GOALS AND ACTUAL NEW CLUBS CUMULATIVE**



**GOALS AND ACTUAL MEMBERS CUMULATIVE**



**DROPPED CLUBS: 3**

52 CLUBS OF 127 ADDED 1 OR MORE NEW MEMBERS

**GENDER DISTRIBUTION**

MALE            3,735 (87.25%)  
 FEMALE        546 (12.75%)

**DROPPED MEMBERS**

[CLICK HERE FOR CUMULATIVE MEMBERSHIP DATA](#)

DECEASED	10
CLUB CANCELLED	56
OTHER	141
<b>TOTAL</b>	<b>207</b>

TOTAL FAMILY UNIT MEMBERS	1,046
FAMILY MEMBERS PAYING HALF DUES	554